

LAMB & WOOL

A Newsletter For The Iowa Sheep Industry / May - 2006

How Many Sheep Does It Take to Make a Living?

Reprinted from The Shepherd Magazine

Ohio State University - The size of a ewe flock, or the number of feeder lambs, required to make a desired income is one of those economic questions most easily answered by "that depends," according to Donald Breece, farm management specialist at Ohio State University Extension Center in Lima.

"It depends on such things as: desired standard of living, amount of debt or investment to be paid by enterprise profits, production efficiency, market prices received, and per-unit cost of production," Breece says.

The majority of farm flocks are 25 to 50 ewes that act as scavengers on a small farm, utilizing wasteland for pasture, unused labor and non-farm income, Breece says. According to Rodney Jones, Kansas State Extension livestock production economist, 250 or more ewes are a more efficient enterprise because farms can justify more labor-saving equipment. However, this size will most likely still not provide enough work, nor income, for a farm family, Breece says.

Economists have generally indicated that it takes about \$42,000 to \$48,000 living costs for an average farm family. So how many dollars of gross farm sales would it generally take to earn nearly \$50,000 to take care of a family?

It generally takes about \$300,000 of gross revenue to generate \$50,000 family living income, Breece says.

"Assume it takes 74 percent of revenue (operating expense ratio) to cover out-of-pocket costs," he says. "This leaves 26 percent for debt service, capital replacement, growth and family living costs. The \$300,000 gross revenue example would net \$78,000. After \$50,000 for family living, this would leave only \$28,000 for debt payments and investment."

How many sheep would produce \$300,000 in gross revenue?

"If you were efficient enough to sell 1.5, 125-pound lambs per ewe at \$90 per hundredweight, the gross per-ewe (not including wool or cull income) income is \$168.75," Breece says. "Therefore, it would take 1,778 ewes if the farm held to a 74-percent

operating expense ratio. In other words, a net of \$43.88 per ewe would be left for debt payments, investment and family living.

Several websites provide various budgets and analysis methods to help establish the profit potential of a given sheep enterprise, Breece says. They can be found at <http://aede.osu.edu/Programs/FarmManagement/Budgets/livestock-2002/index.htm>, www.extension.iastate.edu/agdm/livestock/html/b1-21.html, www.ansci.cornell.edu/sheep/management/economics/cspssoftware/index.html, www.oznet.ksu.edu/library/agec2/mf421.pdf, and www.ext.vt.edu/departments/agecon/spreadsheets/livestock/sheep.html.

Breece notes that net farm income or profit is affected greatly by assumptions made for market prices, production levels (lambs sold per ewe), available family labor and feed costs. He encourages sheep producers to visit the websites, insert their own numbers and determine their own budgets. Breece also notes that producers will need to grow 5 to 7 percent per year just to keep even.

A WAY FORWARD FOR NAIS?

by Stan Potratz (Reprinted from Premier newsletter)

I just returned from the NIAA meeting. I'm encouraged that NAIS officials are moving the program toward a form and timeline that's less intimidating. This is a summary of a note I sent to my senators 3 weeks ago. You may wish to send similar to your congressmen...

1. USDA should declare that NAIS is for cattle only. The other species have been put "on the shelf" until a workable, affordable system be demonstrated. Why?

- The cattle industry has the most to gain from national animal ID/tracking and the most to lose by the absence of one.
- The dairy and beef cattle industries have been the most supportive of NAIS.

- The relative cost per head is the least for cattle (due to their higher value).

- A national tracking system is most likely to work for cattle. It is much less workable for the other species.

2. USDA and NAIS should further announce that they will move toward mandatory ID of cattle but only for official visual ear tags. Use of official RFID tags instead is voluntary. Tracking of cattle will not be made mandatory until a system that does not impede commerce is fully tested and proven. What does this step offer?

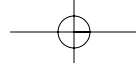
- Since tracking will not be involved it defuses the argument about the database.

APHIS can own the database.

- Visual ear tags cost much less. We could provide custom-imprint tags with official numbers for 50¢ each for an average cattle tag (vs. \$2.25 for an RFID tag). So can six other companies. Less cost means less resistance to mandatory ID.

- Visual ear tags are a known entity to producers. Therefore buying and installing them is less controversial. RFID tags are new, strange and mysterious to many small cattle producers. We all strongly resist that which they do not understand.

- Because they are visual (only), producers will not need to invest in an RFID reader.



ShortCLIPS by Dan Morrical

McNay - Sheep Flock Production Parameters, Daniel G. Morrical - professor Animal Science Department, Jim Secor - Superintendent McNay Research Farm

Introduction

The McNay ewe flock was moved from Beaconsfield to the McNay Farm in the fall of 1989. This flock has served to provide a resource for applied management and nutrition studies along with disease research. This flock is also used as a resource for producer education and demonstrates proper Midwest production systems that can be applied Iowa operations.

Genetically this flock is composed of a prolific white face female. Polypay and crossbred East Fresian and Romanov rams are rotationally used on the ewe flock. The Polypay is fast becoming the standard commercial ewe type in the Midwest and has genetic evaluations via National Sheep Improvement Program which allows ram selections that complement the crossbred rams. Romanov is currently the most prolific genetic resource available in the United States with lambing rates of almost four lambs per ewe lambing. Research data indicates that lambing rate increases by two percent for every one percent Romanov in the ewe base. Therefore

with 30% prolific breeding we expect the McNay flock to drop six tenths of lamb more per ewe lambing. The East Fresian is included to increase milk production to allow the majority of the ewes with triplet or quad births to raise three lambs.

The production cycle starts with breeding on September 10 each year for five weeks. Ewes are flushed with one pound of grain and exposed to teaser rams prior to breeding. Replacement ewe lambs are maintained as separate management group but bred at the same time and lamb at 11 to 13 months of age.

Sector scanner ultrasound technician is hired to determine fetal counts at 45 post ram removal. Open mature ewes and ewe lambs are culled if open. Ewes are grouped and fed according to fetal counts and body condition in late gestation. Example rations are listed in Table 1. Lactating ewes are also fed by number reared with ewe lambs kept separate.

Results and Discussion

The 2006 lambing season at McNay was very successful. One hundred

and seventy-six ewes dropped 389 lambs for a lambing rate per ewe lambing of 2.21. The number born and reared by age group is listed in Table 2. Thirty five lambs did not survive to weaning for a very impressive pre-weaning mortality rate of nine percent. The facility that houses the ewe flock does not contain supplemental heat and ewes are on their own from 10 p.m. to 6 a.m. Another 34 lambs were raised artificial on cold lamb milk replacer. Ewes weaned 1.81 lambs per ewe lambing with an average weight of 44 pounds at 56 days of age. This weaning weight was lighter than previous years due to weaning two weeks earlier. Sixty percent of the ewes which delivered live triplets or quads successfully raised at least three lambs in 2006. Allowing ewes to rear three lambs reduced the number of orphans by 30 head. This level of performance is 25% above the state average lamb crop.

Summary

This flock demonstrates that high lambing rates can be accomplished with management and genetics.

Table 1. McNay ewe rations fed in 2005-2006 productions cyclea.

Late gestation rations	Alfalfa hay	Corn	Prot. Supp.
Mature ewes, singles	4.0	.75	
Mature ewes, twins	4.0	1.30	
Mature ewes, triplet plus	3.5	2.00	
Ewe lambs, singles	2.0	1.50	
Ewe lambs, twins	2.0	2.00	
Lactation rations			
Mature ewes, singles	5.5	.50	
Mature ewes, twins	5.5	2.00	
Mature ewes, triplet plus	5.5	2.50	
Ewe lambs, singles	3.5	1.50	
Ewe lambs, twins	3.5	2.00	.2

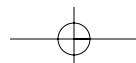
a Alfalfa hay was third cutting with 90% dry matter, 19.9% crude protein, 65% TDN, .99% Ca and .4% P. Protein supplement is custom mix that contains 45% crude protein, 68% TDN, 4.9% Ca and .9% P.

Table 2. McNay lambing performance by age of ewe.

Ewe age	No. ewes	No. born	No.
Weaned			
Ewe lambs	44	1.6	1.5
Yearlings	35	2.3	1.9
Two year olds	17	2.2	1.9
Three year olds	10	3.0	1.3
Four year olds	10	2.9	2.2
Five year olds	19	2.5	1.9
Six year olds and older	41	2.4	1.8
Overall numbers	176	2.2	1.8

IMPORTANT REMINDERS

- Come to all at the Second Annual Sheep & Wool Festival – June 10-11, 2006, Adel, Iowa. Schedule of events is on page 4 inside this newsletter. More detail at www.iowasheep.com/Festival.html or call the ISIA office.
- ISIA Annual Meeting – June 10, 2006, Dallas County Fairgrounds, Adel, Iowa. Election of Officers and voting on proposed By-law changes will take place at this meeting. Proposed By-law changes have been placed on page 6 inside this newsletter.
- Lamb Lovers' Feast – June 10, 2006, 6p.m. Menu - Leg of Lamb, Salad of Seasonal Greens, Herb Garlic Potatoes and Grilled Fresh Vegetables. Call ISIA office for advance tickets.
- Photo Contest details on webpage or call ISIA office.
- Help promote the Festival! Flyers are available on webpage. Tell your friends and neighbors to come and join the fun and our Sheep & Wool Festival.



The Lamb & Wool Newsletter, a publication of the Iowa Sheep Industry Association, is published eleven times each year with partial funding from the Iowa Sheep & Wool Promotion Board.

Iowa Sheep Industry Association
Jim Timmins, President
1440 Rodeo Ave
Monroe, IA 50170
Phone: 641-259-2901
Email: timmins@iowatelecom.net

Marsha Spykerman, Executive Director
5771 230th St
Sibley, IA 51249
Phone/Fax: 712-736-2109
Email: iasheep@iowatelecom.net

Dr Dan Morrical, Ext. Sheep Specialist
337 Kildee Hall
Iowa State University
Ames, IA 50011
Phone: 515-294-2904 o Fax: 515-294-3795
Email: morrical@iastate.edu

Iowa Sheep & Wool Promotion Board
Jon McFadden, Chairman
62677 Pella Rd
Atlantic, IA 50022
Phone: 712-774-5302

Jean Van Houweling, Executive Secretary
PO Box 35633
Des Moines, IA 50315
Phone: 515-287-0215
Email: j.vanhouweling@mchsi.com

Make It Yourself With Wool

Tune up your sewing machines and start making preparations for the 2006 Iowa Make It Yourself With Wool & Made For Others contests. The contests will be held October 28, 2006 at the Merle Hay Mall in Des Moines. Entry must be postmarked one or before October 7, 2006.

Have you ever wanted to enter but didn't know how? Maybe you just have questions about the contest. Contact Sandi Bolton, State Director MIYWW, 712-568-1062. Email: bolton@hickorytech.net.



Iowa Sheep & Wool Promotion Board

The Iowa Sheep and Wool Promotion Board met Thursday, April 13, 2006 at the Farm Bureau Building, West Des Moines, Iowa. Those present: Jerry Sorensen; Tom Cory; James Koss; Jon McFadden; Les Vander Linden; Dan Morrical, ISU Extension; Harold Hommes, IA Dept. of Agriculture; Sandi Bolton, State Director MIYWW and husband Jim; Marsha Spykerman, ISIA Executive Director; and Jean Van Houweling, ISWPB Executive Secretary.

The meeting was called to order at 10:30 a.m. by Chairman Jon McFadden. Motion Made, Seconded and Approved (MMSA) to approve the minutes of the January 12, 2006 meeting as mailed. MMSA to approve the treasurer's report as presented.

Sandi Bolton, Iowa State Make It Yourself With Wool (MIYWW) Director discussed the changes made the past year and gave a financial follow-up report for the 2005-06 expenses and income. The contest has a different name "Iowa Make It Yourself with Wool & Made for Others Contest".

Funding requests approved were #502, MIYWW; #498, the 2006 Iowa Show Lamb Camp, Jasper County Fairgrounds; #499, National Lamb Show, Brookings, SD; #500, ISIA - 6th Annual State Center BBQ Championship; #501 ISU Research Proposal "Abortion Etiologies in Iowa Sheep".

The Board liked the idea that Dr. Suelee Robbe-Austerman was one of

the investigators. It was decided that ISU Veterinary Medicine Administration be sent a letter expressing the Board's desire that Dr. Suelee Robbe-Austerman be employed permanently. She is a great asset to Iowa sheep producers.

ISIA proposal #490 approved at the July 2005 meeting to be amended. Marsha stated that the Sheep Activity Booklet and the Farm Fresh Producers Directory will not need to be reprinted yet and ISIA wishes to apply the funds toward the summer Sheep & Wool Festival. MMSA to approve the amended request.

The 2006 candidate election will be held by absentee ballot; election date June 6, 2006. Tom Cory's and Gary Erickson's terms expire the end of June 2006. Bob Kimm is nominated to serve CR District #5. Bill Dohrmann has consented to serve another 3-year term from District #3. District #2 does not have a nominee yet.

Marsha gave a director's report of her activities during the past quarter January 2006-March 2006.

Tom Cory was presented a certificate of appreciation for faithful years of service from July 2000 to June 2006. The next meeting will be held Friday July 14, 2006 in at, Ames.

Meeting adjourned at 11:55 a.m. Minutes respectfully submitted by: Jean Van Houweling Executive Secretary.

COMMERCIAL BREEDING STOCK FOR SALE

Dorper and White Dorper and crossbred rams \$375 and up. Crane Creek Dorpers and White Dorpers www.netins.net/showcase/sam/ccd.htm, S.A. Mitcham, 3061 160th Street, Sumner, Iowa 50674, 563-578-5665 or email: sam@netins.net.

Ram Lambs - September born 1/2 Romanov X 1/4 White Dorper X 1/4 Polypay (mostly QR) and November & February born 1/2 Romanov X 1/2 Rambouillet. Also 1/2 Romanov Teaser Rams available. Wes Moser, Lester, IA 51242, 712-478-4622, email: wesmoser@juno.com.

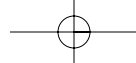
Dorset/Suffolk crossed ewe lambs and wethers. Kimm sired. Pat Meehan, 2587 Hwy 38, Hopkinton, Iowa 52237, 563-926-2573.

Fourteen head 1/2 Romanov X 1/2 Dorset ewe lambs. Bob Jahner, 1150 McKimber Lane, Knoxville, Iowa 50138, 641-828-8933 or 641-891-7491, bjahner@iowatelecom.net.

Ewe Flock Dispersion: 160 productive ewes of various ages - Warhill X Romanov X East Friesian breeding. Also 30 highly productive Romanov ewes. Ewes will be offered in July and December, 2006 at the conclusion of spring and fall lambing. Dennis Wolf, 712-546-5556, wolfdj@frontier-net.net.

Suffolk and Polypay cross ewe lambs. Rams based from NSIP flocks. Prolificacy and growth records used in selection for 15 years. 100 ewes and 28 ewe lambs weaned 195%. Select on the records. Steve Bernhard, 2003 190th St., Algona, IA 50511, 515/679-4006, brnhrd@ncn.net.

*Note: This is a free listing for ISIA members. ISIA members are encouraged to submit breeding stock for sale along with name and contact information (address, phone, email) to the ISIA office at 5771 230th St., Sibley, IA 51249, (712) 736-2109 or iasheep@iowatelecom.net.



2006 Summer Sheep & Wool Festival Schedule Dallas County Fairgrounds, Adel, Iowa

Saturday, June 10

- 7:00 a.m. Lamb Foodstand Open
- 8:00 a.m. Gates open to the public. Equipment and Industry Exhibits and Hall of Breeds – all day.
- 8:30 a.m. Fiber Vendors Buildings open with Fiber Demonstrations - all day.
- 8:30-9:30 a.m. Fleece Show Registration
- 8:30-11:30 a.m. Fiber Classes: Beginning Tri-Loom, Beginning Spinning, Circular Sock Machine Basics and Circular Sock Machine Advanced
- 9:00 a.m. Sheepdog Trial Begins at South Arena – Nyle Sealine, Judge
- 9:00 a.m. Meat Goat Production by Eric Finch
- 9:30 a.m. Alternative Feeds for Sheep by Dr. Dan Morriscal
- 10 a.m.-4 p.m. Children's Fiber Classes – Learn to Knit on a Round Loom (10am-Noon), Spinning for Children – three sessions (10-11am, 1-2pm & 3-4pm), Wool Angels (1-2pm), Felted Fridges (2-3pm), Wool Stomping (1-3pm).
- 10 a.m.-3 p.m. Fleece-to-Shawl Competition (Noon – 1:00 p.m. Break for Lunch)
- 10:00 a.m. Facilities, Fencing & Feeders for Meat Goats by Bruce Handy, Don Moothart & Vern Thorp
- 10:30 a.m. Fleece Show & Judging, then Fleeces on Display until 3 p.m. on Sunday
- 10:30 a.m. Strategic Internal Parasite Control & FAMACHA® Training by Dr. Suelee Robbe-Austerman, DVM
- 10:30 a.m. Shearing Demonstration by Rocky Anderson
- 11:00 a.m. Meat Goats as a 4-H/ FFA Project by Daniel Palmersheim
- 11:30 a.m. Evaluating Market Lambs for Fat and Muscle by Dr. Dan Morriscal
- 12:30 p.m. Shearing Demonstration by Rocky Anderson
- 12:30-3:30 p.m. Fiber Classes: Spinning Novelty Yarns, Hot Rainbow Dyes, Introduction to Drum Carding, Navajo Tapestry on a Cardboard Loom, Beginning to Intermediate Lace Knitting
- 1:00 p.m. Ewe Lead competition
- 1:00 p.m. Goat Health Issues by Dr. Nathan Peterson, DVM
- 1:30 p.m. National Animal Identification System (NAIS) and Electronic Identification Devices (EID) by Stan Potratz
- 2:00 p.m. Lamb Cooking Demonstration & Lamb Sampling
- 2:00 p.m. Shearing Demonstration by Rocky Anderson
- 2:00 p.m. Livestock Guardian Dogs by Vickie Beyer
- 2:30 p.m. General Sheep Doctoring Skills (including hands on practice for collecting a blood sample for DNA testing) by ISU Veterinary Students
- 3:00 p.m. Iowa Sheep Industry Association Annual meeting
- 3:00 p.m. Panel Discussion Boer Goat, Meat Goat Producers – Gilchris, Mootharts Palmersheims
- 3:30 p.m. Shearing Demonstration by Rocky Anderson

- 6:00 p.m. Lamb Lovers' Feast & Entertainment – Tickets \$15/person (no gate fee after 4p.m.)

Sunday, June 11 Admission Charged at the Gate

- 7:00 a.m. Lamb Foodstand Open
- 8:00 a.m. Gates open to the public
- 8:00 a.m. Cook-Off participants may set up and start cooking. Equipment & Industry Exhibits and Hall of Breeds – all day
- 8-10 a.m. Check in time Iowa Jr. Sheep Extravaganza & Regional Dorset Show
- 8:15 – 8:45 a.m. Church Service
- 8:30 a.m. Fiber Vendors Buildings open with Fiber Demonstrations all day.
- Fleeces on Display until 3 p.m.
- 8:30-11:30 a.m. Fiber Classes: Flat Felt a Shoulder Purse, Spinning with Silk, Locker Hook a Hot Pad, Dyeing Patterned Sock Yarn, Basic Wool Preparations
- 9:00 a.m. Sheepdog training sessions begin with Nyle Sealine
- 9:30 a.m. Alternative Feeds for Sheep by Dr. Dan Morriscal
- 10 am-3 pm Children's Fiber Classes – Spinning for Children – three sessions (10-11am, 12:30-1:30pm & 2-3pm), Wool Stomping (1-3pm), Cardboard Weaving for Kids (1-3pm).
- 10:00 a.m. Shearing Demonstration by Rocky Anderson
- 10:30 a.m. Strategic Internal Parasite Control & FAMACHA® Training by Dr. Suelee Robbe-Austerman, DVM
- 11:00 a.m. Iowa Jr. Sheep Extravaganza & Regional Dorset Show
- 11:00 a.m. Livestock Guardian Dogs by Chan Williams
- 11:30 a.m. Evaluating Market Lambs for Fat and Muscle by Dr. Dan Morriscal
- 11:30 a.m. Shearing Demonstrations by Rocky Anderson
- 12:30-3:30 p.m. Fiber Classes: Carding for Color & Texture, Beginning Spinning, Painted Skeins, Beginning to Intermediate Lace Knitting
- 1:00 p.m. Goat Health Issues by Dr. Nathan Peterson, DVM
- 1:30 p.m. Shearing Demonstration by Rocky Anderson
- 1:30 p.m. National Animal Identification System (NAIS) and Electronic Identification Devices (EID) by Stan Potratz
- 2:00 p.m. Judging – Lamb Cook-off & Lamb Sampling
- 2:00 p.m. A Day in the Life of a Goat Producer by Chan Williams
- 2:30 p.m. Shearing Demonstration by Rocky Anderson
- 2:30 p.m. General Sheep Doctoring Skills (including hands on practice for collecting a blood sample for DNA testing) by ISU Veterinary Students
- 3:00 p.m. Meat Goat Wethers by Vern Thorp
- 4:00 p.m. Gates Closed. Have a safe trip home and plan to attend again the second week-end in June, 2007.

Pre-registration for Fiber Classes is recommended. For more information on classes, seminars and presenters, please check www.iowasheep.com/Festival.html or call 712-736-2109.



Tom Cory (right) receives Certificate of Appreciation from Jon McFadden, Chairman ISWPB for six year of service to the sheep producers in the state of Iowa. Also receiving a certificate for six years of service was Gary Erickson who was unable to attend the April meeting.

Iowa Sheep & Wool Promotion Board Election

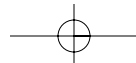
Iowa Sheep and Wool Promotion Board Chairman Jon McFadden announced that sheep and wool producers will vote June 6, 2006 by absentee ballot to elect directors from Crop Reporting Districts #2 (North Central), #3 (North East) and #5 (Central).

Nominated candidates for the director elections are: District #3, Bill Dohrmann of Fayette; district #5, Bob Kimm of Dysart; district #2 has no

candidate at this time.

Producers residing in these districts may be nominated for seats representing the districts by calling ISWPB office at 515-287-0215.

If you reside then any of the above districts, you may call the office for an absentee ballot! Any person who produced or marketed sheep or wool from June 1, 2005 to May 31, 2006 is eligible to vote in this year's election.





ISIA Board Meeting in West Des Moines

The Iowa Sheep Industry Association board meeting was held on April 13, 2006 at the Iowa Farm Bureau Federation building in West Des Moines. The meeting was called to order at 1:30 PM by President Jim Timmins. Board members present: Jim Timmins, Chris Osborn, Erlene Leonard, Ben Johnson, Bob Kimm, Dan Morriscal, and Executive Director Marsha Spykerman.

Due to the absence of the secretary Marsha was appointed to take minutes of the meeting.

Bob made a motion to approve the minutes as sent out. Seconded by Dan; all ayes. Dan made motion to acknowledge the treasurer's report as presented by Erlene. Bob seconded; all ayes.

Marsha gave the director's report. Membership stands at 282 regular, five county groups and 35 paid 2006 affiliates. She attended: a meeting in Sheldon on Cydectin® and FAMACHA®, the IFFB Sheep and Goat Advisory Committee meeting, the Greene County and Madison County annual meetings and banquets. Most of her time has been dedicated to Festival preparations, updating the webpage and getting material and ads ready for the festival booklet.

ISU report was given by Dan. He thought he saw some strength in the lamb market earlier but now is not sure. According to the numbers our kill is 25% higher than one year ago. The direction of the market will depend upon how many of the old crop lambs are still being held. He expressed concern that Dr. Suelee Robbe-Austerman, DVM had not been hired with a permanent position at the Vet College even though she has interviewed for two open positions. If sheep producers are concerned that the Vet College hires someone with sheep knowledge we need to let them know. The ISU Extension budget is overextended and Dan's department must take a 2 1/2% budget reversal. Some difficult decisions will need to be made. On a brighter note, the dairy farm is letting bids which means ISU is one step closer to an off campus arena. This

will be built with large amount of donated dollars and suggestions are welcomed if anyone has ideas for large contributors.

Bricks for placement outside the Sheep Barn at the Iowa State Fair have been ordered for Dennis Wolf (ISIA Service Award) and Jim Timmins (ISIA President). Bob Kimm (ISIA Service Award) already has been awarded a brick as previous ISIA President. The ISIA Matching Grant Application to the American Lamb Board has been approved. The funds will be used for the Cook-off, Cooking Demonstration and the Lamb Lovers' Feast at the Festival.

Suggested amendments to the ISIA By-laws were discussed. Dan made a motion to vote on the amendments at the Annual Meeting on June 10, 2006. Bob seconded; all ayes. The amendments will be placed in the May newsletter. Erlene made the motion that more advertising spots be offered on the back page of the newsletter for \$125 annually. Dan seconded; all ayes. Discussion was held regarding the letter from the ASI State Executives to ALB concerning In-kind vs. Cash match for the grants. Dan made a motion that ISIA not be a signor on the letter. Ben seconded; all ayes. Discussion was held concerning several aspects of the

Festival and items that still need to be worked on.

The next board meeting will be a conference call meeting on May 14, 2006 at 7 p.m. Meeting adjourned. Respectfully submitted, Marsha Spykerman, Secretary Pro-Tem.

Big Doings in Des Moines!

• Iowa State Fairgrounds •

May 26 **NATIONAL** May 27

CORN BELT

SHOW: Friday 8:00 a.m. SALE: Saturday 9:00 a.m.

SHOW & SALE

Kenny Urban - Judge Curtis Overcash - Auctioneer

• Hampshires • Corriedales
• Polled Dorsets • Suffolks
• Southdowns • Columbias

Over 350 Head!

Rams and Ewes...Yearlings...Fall & Spring Lambs

Friday Night Sales...

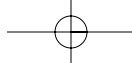
• Berry • Dohrmann •
TRENDSETTER
CLUB LAMB SALE

...and the **National Corn Belt**
Wether Sire Sale
Sires...Dams...Wethers

Check these Websites for added information on these Sales...
www.sheepsales.com
www.breedersworld.com

Sheep-Breeder

TELEPHONE 573-443-8227 • FAX 573-474-8843
PO BOX 798 • COLUMBIA, MO 65206-0798



Proposed Changes in the By-laws of the Iowa Sheep Industry Association

To be voted on at the ISIA Annual meeting June 10, 2006. Complete By-laws are available at www.iowasheep.com/By-laws.html or call 712-736-2109 for a copy.

#1 - Change Article I. to: This organization shall be known as the Iowa Sheep Industry Association. This organization is a non-profit organization organized under the provisions of Chapter 504A of the Code of Iowa. The letters ISIA may be officially used to designate the organization and/or its members.

#2 - Change Article III, Section A. to: The Executive Board will have the authority to define voting and non-voting categories. Membership Eligibility:

A) Active Member - Individual or Family interested in promoting the purpose of this organization as set forth above. Active members with current paid membership shall hold all rights and benefits of ISIA membership and shall have one vote.

B) Life Members - Members who obtained life membership prior to November 20, 1993 hold all rights and benefits of ISIA membership and shall have one vote.

C) Associate Sheep Producers - Organized groups with current paid membership shall hold all rights and benefits of ISIA membership and shall have one vote.

D) Affiliate Member - Any State organization or business interested in promoting the purposes of this organization as set forth above. Affiliate members shall have no vote and shall not be delegates.

#3 - Throughout the By-laws the office of the Director of Communication and Promotions will be changed to Executive Director.

#4 - Article IV, Section A - Remove: and shall be held within sixty (60) days of the close of the fiscal year

#5 - Change Article IV, Section B to: A quorum of the Delegate Assembly necessary to conduct business affairs shall consist of the number of registered delegates in the Association present at the meeting.

#6 - Add to Article IV, Section C: Meetings may be conducted face-to-face, via conference call, or any other electronic means which may become available. Special business may be conducted via E-mail or other electronic means when deemed necessary.

#7 - Change Article V, Section B to: Membership in the Association, other than Life Members, shall be a 12 month membership; Affiliate Membership will be the same as for the Association's fiscal year.

#8 - Change Article VII, Section B to: Dues may be collected on an individual/family basis, through an Associate Sheep Producer Group or directly from Affiliate Members.

#9 - In Article VIII, Section B - Item 1: Change Past-President to Vice President; Items 5 & 6: Remove: in accordance with the fiscal year.

#10 - Article VIII, Section C - Remove: Items 2e and 3c.

#11 - Article VIII, Section C - Add: email or any other electronic means available.

#12 - Article IX, Section D & E - Remove: excepting the American Sheep Industry Association Directors

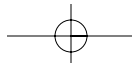
#13 - Article XI, Section D, Item 2b - Remove: annually and remove: to the Delegate Assembly. Item 5 - Remove in its entirety.

#14 - Remove Article XIII in its entirety and change the numbering on the remaining Articles XIV - XVI accordingly.

CALENDAR OF EVENTS

May 16-18	U.S. Meat Animal Research Center (U.S. MARC), Clay Center, Nebraska, Surplus Breeding Sheep Sale by Internet Messenger Auction. The auction site will be accessible at the MARC home page: www.marc.usda.gov . Information about the sale and sale sheep will be posted on the web site May 10, 2006. For more information contact Mike Wallace at wallace@email.marc.usda.gov or 402-762-4137.
May 26	National Corn Belt Show, 8:00 am at the Iowa State Fairgrounds, Des Moines, Iowa. For more information contact: Sheep Breeder, PO Box 796, Columbia, MO, 573-442-8257.
May 27	National Corn Belt Sale, 9:00 am at the Iowa State Fairgrounds, Des Moines, Iowa. For more information contact: Sheep Breeder, PO Box 796, Columbia, MO, 573-442-8257.
June 3	Wisconsin Ram Test entry date for March lamb. Contact Nils Nelson at 608-876-6928
June 6	Iowa Sheep & Wool Promotion Board Election CR Districts # 2, # 3 and #5. See article elsewhere in newsletter or if you have questions contact Jean Van Houweling, Executive Secretary, 515-287-0215 or j.vanhouweling@mchsi.com
June 10	Iowa Sheep Industry Association Annual meeting, Adel, Iowa in conjunction with the 2nd Annual Iowa Sheep & Wool Festival.
June 10-11	Second Annual Iowa Sheep & Wool Festival, Adel, Iowa. Come and join the fun! Visit www.iowasheep.com for schedules and updates.
June 15	Deadline for submitting funding requests to the Iowa Sheep and Wool Promotion Board to be reviewed at their July 14, 2006 meeting. For more information contact: Jean Van Houweling, Executive Secretary, PO Box 35633, Des Moines, IA 50315. Email j.vanhouweling@mchsi.com
June 16 - 17	Sixth Annual State Center BBQ Championship. Lamb will be one of the "special" meats to be cooked. For more information contact: Daryl Schoppe, 1267 A 240th St, State Center, Iowa 50247, 641-483-2656 or mschoppe@iowatelecom.net
July 8	Center of the Nation NSIP Sale, Clay County Fairgrounds, Spencer, Iowa. Any breeds with NSIP EPD's are eligible and each breeder may enter two rams and up to six ewe lambs. Entries due by May 1, 2006. For entry information contact: Banner Sale Management Service, PO Box 500, Cuba, IL 61429, 309-785-5058. Find the catalog in March at www.bannersheepmagazine.com .
July 14	Iowa Sheep and Wool Promotion Board meeting will be held at Iowa State University, Ames, Iowa.

Do you have an event that you would like to place in the Lamb & Wool newsletter? Please send information by the 15th of the month preceding publication date of newsletter. Submit via email at iasheep@iowatelecom.net or phone 712-736-2109.



A GUIDE FOR SHEEP AND FARM LIFE

THE SHEPHERD

MAGAZINE

A magazine every month!

1 year.....\$25.00
2 years\$45.00

Mention Iowa LAMB & WOOL and receive a FREE sample.

THE SHEPHERD

5696 Johnson Road, New Washington, OH 44854-9736
Phone: 419-492-2364

CAN YOUR LAMBS BRING MORE MONEY?



Try Equity's Electronic Lamb Auction and maximize your return on investment. Market your sheep and lambs on a "real time" internet auction to all major packers.

EQUITY

Equity Cooperative Livestock Sales Association

E10890 Penny Lane
Baraboo, WI 53913
www.equitycoop.com

LET US SHOW YOU OUR COMPETITIVE ACTION SOFTWARE!

What's in it for you?

You'll benefit from a nationwide competitive auction market by saving time, cutting costs and increasing your returns. Check out and compare our past price returns on our web site at equitycoop.com. Call 800-362-3989 and find out what Equity can do for you.

ENESSUFFOLKS

NSIP RECORDS SINCE 1989

Emphasis on Performance and Carcass Traits

Breeding Stock for Sale
Young QR & RR Ewes Bred to and/or Sired by Kimm Rams

Paul Eness
3081 390th Street • Dayton, IA 50530
Phone: 515-547-2302 • Email: eness@lvcta.com

SANDAGE FARMS


★ REGISTERED SUFFOLKS ★ CLUB LAMBS

JEFF & CONNIE SANDAGE


1189 200th Street
State Center, Iowa 50247

Phone
641-483-2291

HAMPSHIRE AND COLUMBIA SHEEP



GARY M. ERICKSON
Maple Crest Farm
1896 220th Street,
Humboldt, IA 50548
Phone: 515-332-1680



MID-STATES WOOL GROWERS WOOL MARKETER

Northwest Iowa Sheep Producers

WOOL PRODUCTS FOR SALE

- Slippers
- Moccasins
- Steering Wheel Covers
- Seat Belt Strap Wraps
- Wool Wax™ Hand Cream with Lanolin
- Dusters
- Mittens
- Gloves
- Lamb Pelts

TO ORDER CALL: 712-728-2059
Edwin and Arlene Meerdink
3522 Vine Avenue, Hartley, IA 51346

Let Polypays add maternal traits to your flock without sacrificing performance!

We have over 15 years of combined NSIP records stressing milk, milk and growth, and number born.

View Fall, Summer and Spring born Rams at two farms, 15 miles apart.

Woodhill Farm, Woodbine, IA • 712-647-2492
West Cyclone Farm, Harlan, IA • 712-755-7250

Plum Grove Farm

AUSTIN & DAVID CHARLSON

Purebred Katahdin - Locker Lamb

Austin: 515-825-3692
David: 641-444-4497

1707 Page Avenue, Clarion, Iowa 50525
www.plumgrovefarm.com • E-mail: dandj@kalnet.com

FARM FRESH FROZEN LAMB

~for your promotions~

Lamb Burger (\$3/lb)
100% Lamb Brats (\$1.25 each)

Price List for all other cuts available

KARBER & KIDS HAMPSHIRE

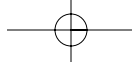
Purebred Hampshires and Hampshire-influence Wether Sheep
Steven Karber, 1049 220th Street, Jefferson, IA 50129
Phone 515-386-8216 • E-mail skarber@mcfarlandclinic.com

Greiner Club Lambs

Ted Greiner
52217 330th Ave
Keota, IA 52248
phone: 641-636-2315
cell: 641-660-6839
ted1974@iowatelecom.net

Sid Greiner
2818 240th St
Williamsburg, IA 52361
phone: 319-668-2354
cell: 319-330-6139
miggreiner@iowatelecom.net

For Sale: Wethers, Rams, Ewes and Aged Ewes
HAMP HAMP INFLUENCED SUFFOLK
GROUP DISCOUNTS - VISITORS ALWAYS WELCOME



Membership in the Iowa Sheep Industry Association produces results that no one member could accomplish alone!

Join ISIA by sending your name, address, county, phone, and e-mail along with \$25 to:
Iowa Sheep Industry Association, 5771 230th St, Sibley, IA 51249.

Twelve month membership includes a FREE membership in the American Sheep Industry Association.

KIMM SUFFOLKS

~Home of Balanced Genetics~

"Good selection of Commercial Rams for sale"

See what we can offer your flock at:
www.breedingsheepage.com/kimm

BOB KIMM

1636 W Avenue • Dysart, Iowa 52224
Phone: 319-476-3875 • Email: bbkimm@netins.net

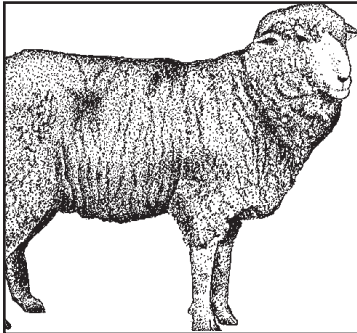
Goat Hill Polypays



If you are looking for a maternal ram check out our genetics at www.evertek.net/goathill.

NSIP Records Since 1995

Scott, Chris, Emma, Katy & Henry Rinehart
4535 Hwy 71, Sioux Rapids, IA 50585
Phone: 712-262-4983



How would you like to see your **STOCK, SERVICES OR EQUIPMENT** advertised to hundreds of Iowa Sheep producers?

This is your opportunity! The ISIA newsletter has two spots currently open for advertising. Call 712-736-2109 to find out more about advertising in the LAMB & WOOL!

Advertising dollars support the cost of subscriptions to extension offices, legislators and ag educators.

MARK YOUR CALENDAR!
Saturday, June 10, 2006
Iowa Sheep Industry Association
Annual Meeting
Saturday & Sunday, June 10 & 11, 2006
Second Annual Sheep & Wool Festival

Iowa Sheep Industry Association
% Marsha Spykerman
5771 230th St
Sibley, IA 51249-7034

LAMB & WOOL

NON-PROFIT
U.S. POSTAGE
PAID
SHELDON, IA
PERMIT NO. 73

